

8109.282 Salvador 1~

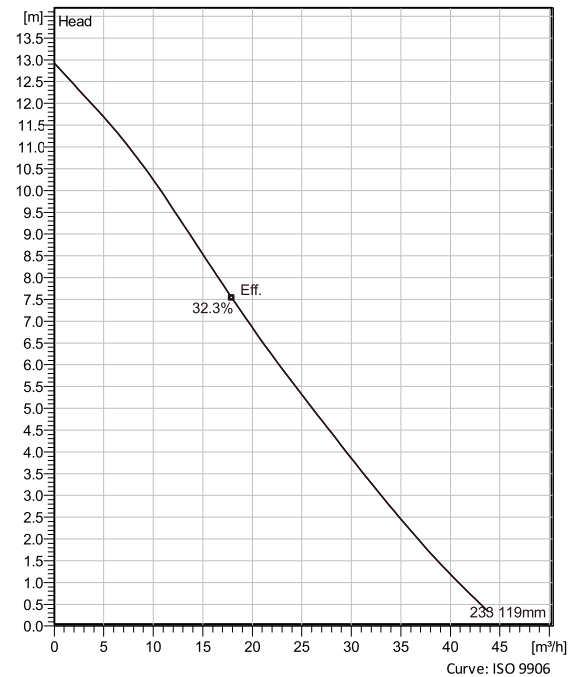
Grindex sludge pumps are designed for professional use in tough applications like mines, construction sites, tunnel sites and other demanding industries. They are designed for pumping water with high content of solids, up to the size of 80 mm. The pumps are designed for continuous, unattended operation. They have proven their reliability and dependable performance in demanding areas like building and construction, mining, tunnelling, quarries, industries, car washes and rental applications.



Technical specification



Curves according to: Water [100%], 4 °C, 999.9 kg/m³, 1.569 mm²/s



Configuration

Motor number D8109.282 13-10-2BB-W 1.5KW	Installation type S - Portable Semi permanent, Wet
Impeller diameter 119 mm	Discharge diameter 80 mm

Pump information

Impeller diameter 119 mm
Discharge diameter 80 mm
Inlet diameter 80 mm
Maximum operating speed 2810 rpm
Number of blades 6

Materials

Impeller Hard-Iron
Stator housing material Aluminium

Project		Created by	Last update
Block	0	Created on	5/13/2020

8109.282 Salvador 1~

Technical specification



Motor - General

Motor number D8109.282 13-10-2BB-W 1.5KW	Phases 1~	Rated speed 2810 rpm	Rated power 1.5 kW
ATEX approved No	Number of poles 2	Rated current 8.7 A	Stator variant 1
Frequency 50 Hz	Rated voltage 220 V	Insulation class F	Type of Duty S1

Motor - Technical

Power factor - 1/1 Load 0.99	Motor efficiency - 1/1 Load 79.5 %	Total moment of inertia 0.0022 kg m ²	Starts per hour max. 15
Power factor - 3/4 Load 0.99	Motor efficiency - 3/4 Load 80.5 %	Starting current, direct starting 31 A	
Power factor - 1/2 Load 1.00	Motor efficiency - 1/2 Load 76.5 %	Starting current, star-delta 10.3 A	

Project

Block 0

Created by

Created on 5/13/2020

Last update

8109.282 Salvador 1~

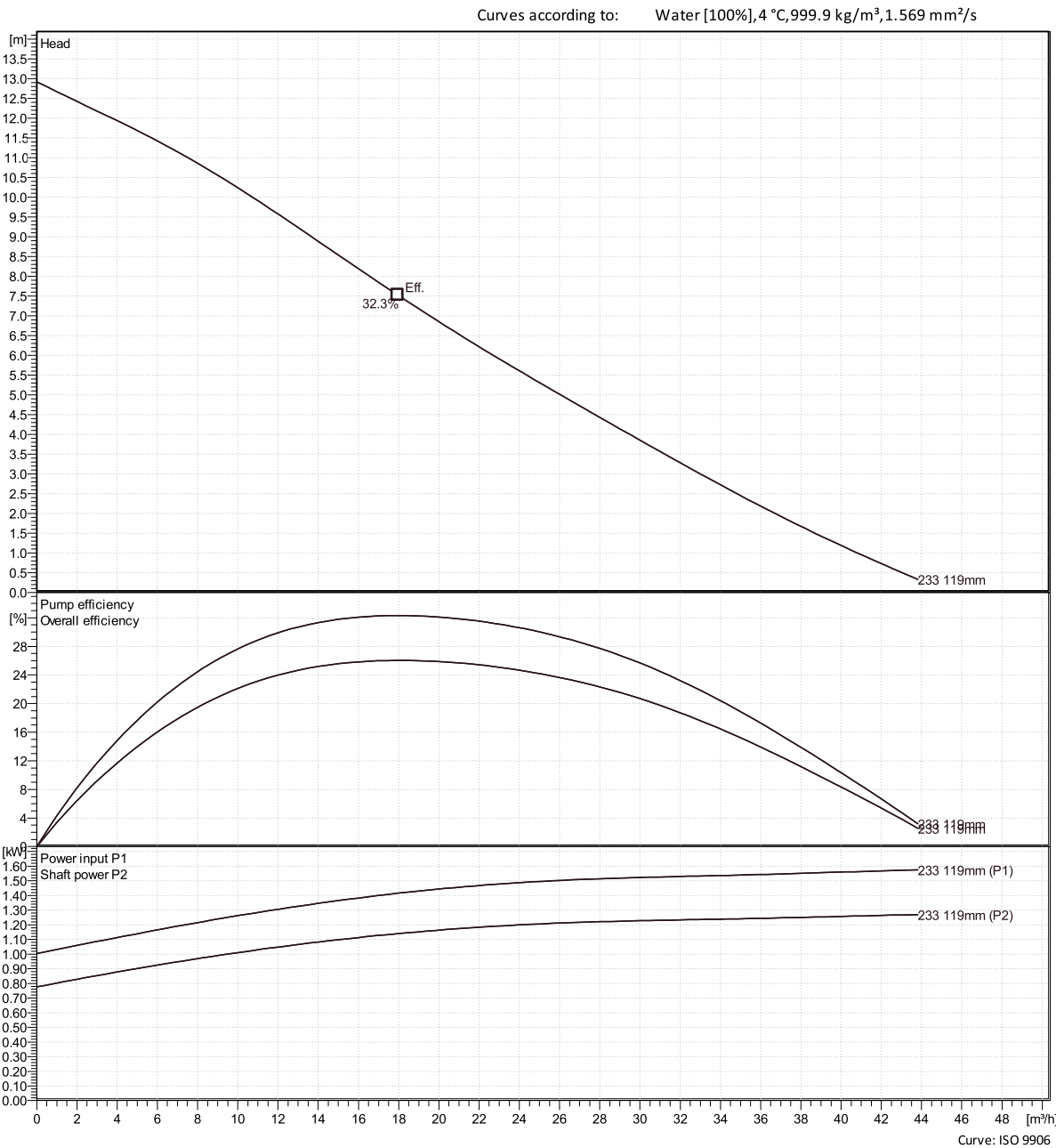
Performance curve



Duty point

Flow

Head



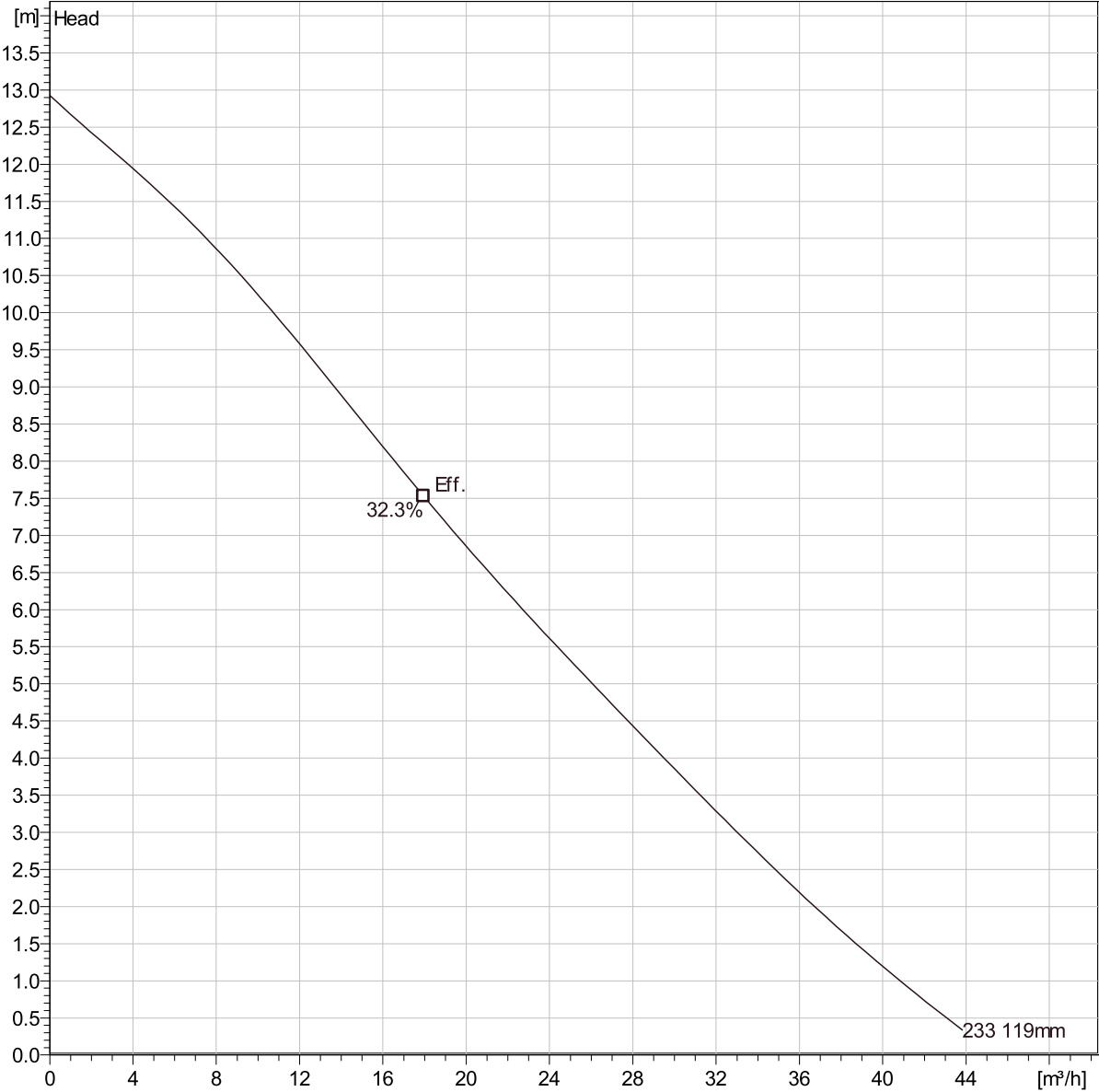
Project		Created by		Last update	
Block	0	Created on	5/13/2020		

8109.282 Salvador 1~

Duty Analysis



Curves according to: Water [100%], 4 °C, 999.9 kg/m³, 1.569 mm²/s



Curve: ISO 9906

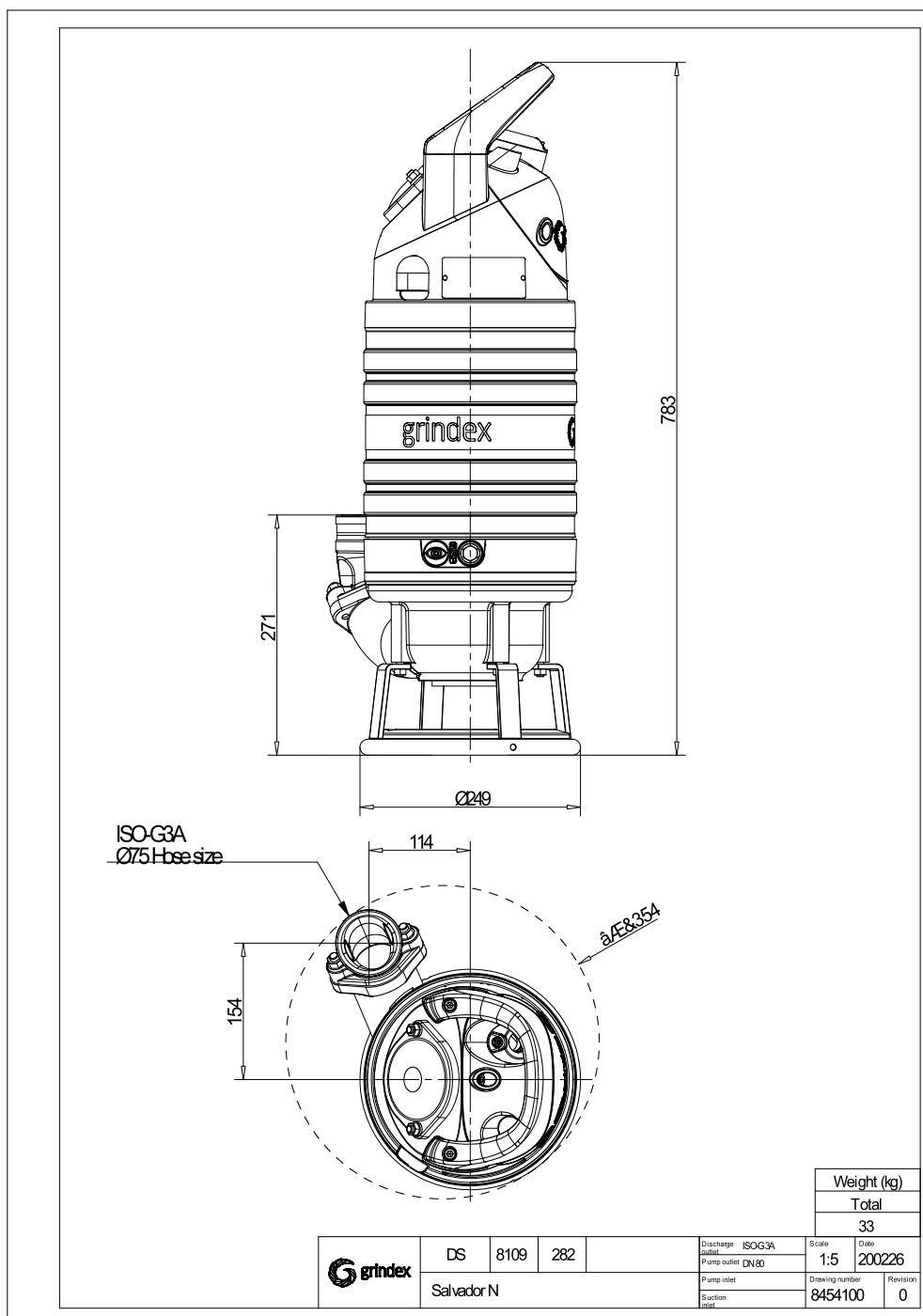
Operating characteristics

Pumps/Syste ms	Flow	Head	Shaft power	Flow	Head	Shaft power	Hydr.eff.	Specific Energy	NPSHr
-------------------	------	------	-------------	------	------	-------------	-----------	--------------------	-------

Project		Created by		Last update	
Block	0	Created on	5/13/2020		

8109.282 Salvador 1~

Dimensional drawing



Project
Block

0

Created by
Created on

5/13/2020

Last update