

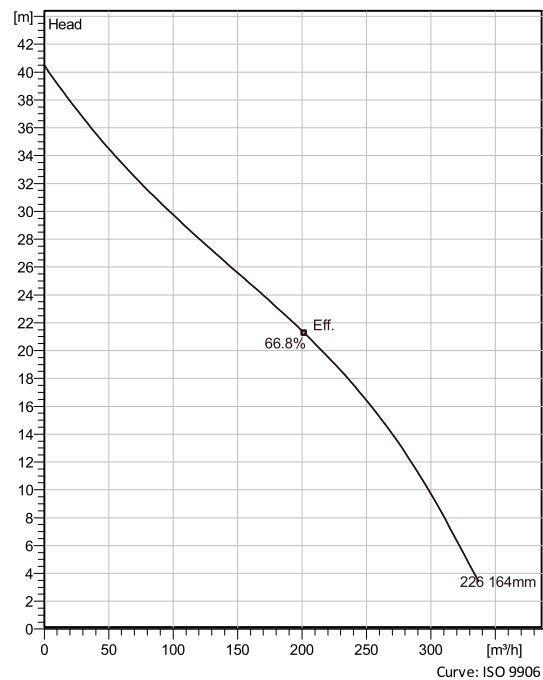
8106.181 Matador N 3~

Grindex drainage pumps are designed for professional use in tough applications like mines, construction sites, tunnel sites and other demanding industries. They are designed for pumping water that may contain solids – up to the size of the strainer holes. Grindex drainage pumps are designed for continuous, unattended operation. They have proven their reliability and dependable performance in demanding areas like building and construction, mining, tunnelling, quarries, industries and rental applications.

Technical specification



Curves according to: Water, pure [100%], 4 °C, 999.9 kg/m³, 1.5692 mm²/s



Configuration

Motor number B8106.181 21-18-2BB-W 18KW	Installation type S - Portable Semi permanent, Wet
Impeller diameter 164 mm	Discharge diameter 150 mm

Pump information

Impeller diameter 164 mm
Discharge diameter 150 mm
Inlet diameter 111 mm
Maximum operating speed 2905 rpm
Number of blades 3
Throughlet diameter 35 mm

Materials

Impeller Hard-Iron
Stator housing material Aluminium

8106.181 Matador N 3~

Technical specification



Motor - General

Motor number B8106.181 21-18-2BB-W 18KW	Phases 3~	Rated speed 2905 rpm	Rated power 18 kW
Approval No	Number of poles 2	Rated current 33 A	Stator variant 7
Frequency 50 Hz	Rated voltage 400 V	Insulation class H	Type of Duty S1

Motor - Technical

Power factor - 1/1 Load 0.89	Motor efficiency - 1/1 Load 89.5 %	Total moment of inertia 0.0363 kg m ²	Starts per hour max. 30
Power factor - 3/4 Load 0.85	Motor efficiency - 3/4 Load 91.0 %	Starting current, direct starting 238 A	
Power factor - 1/2 Load 0.75	Motor efficiency - 1/2 Load 91.0 %	Starting current, star-delta 79.3 A	

8106.181 Matador N 3~

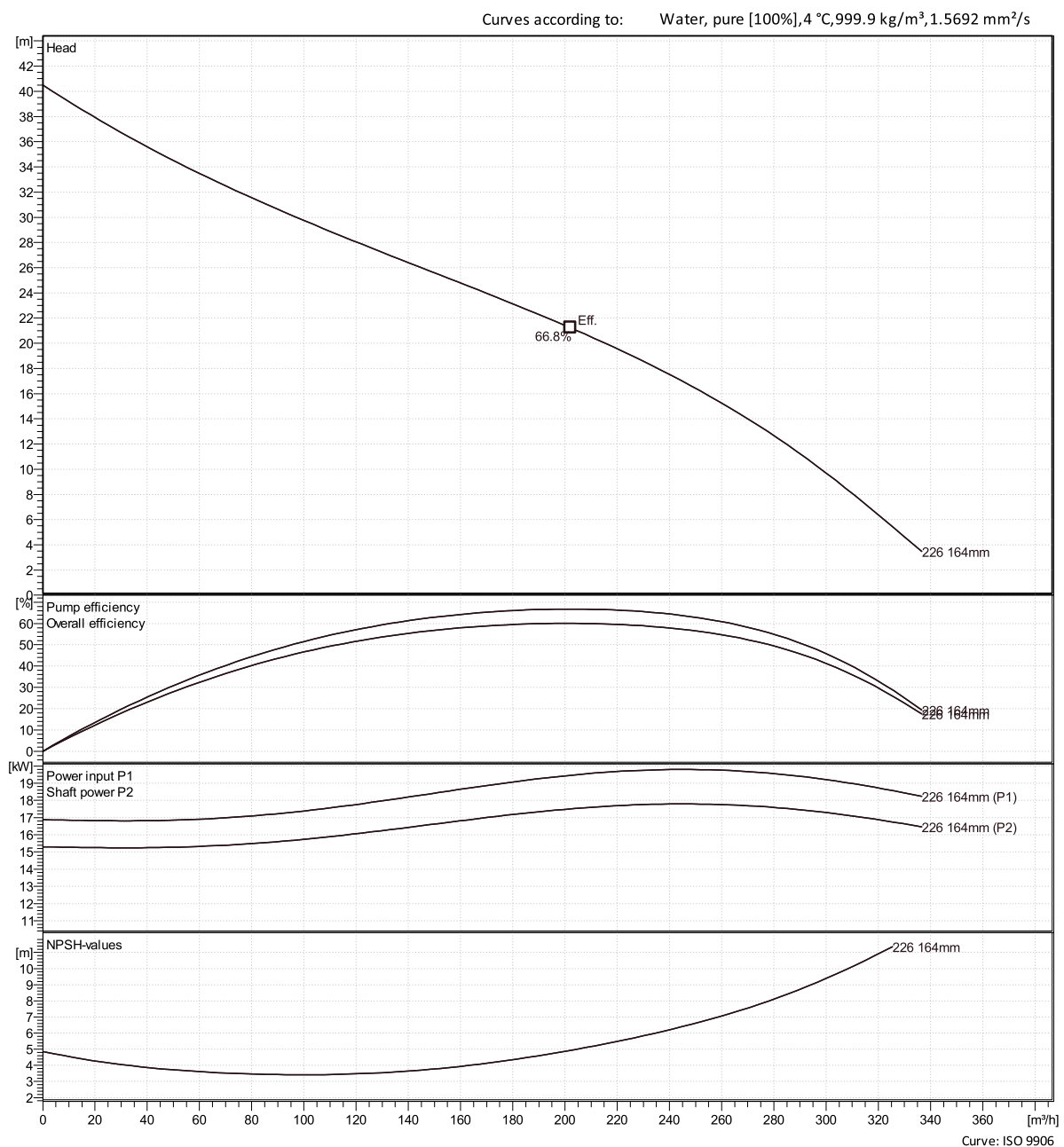
Performance curve



Duty point

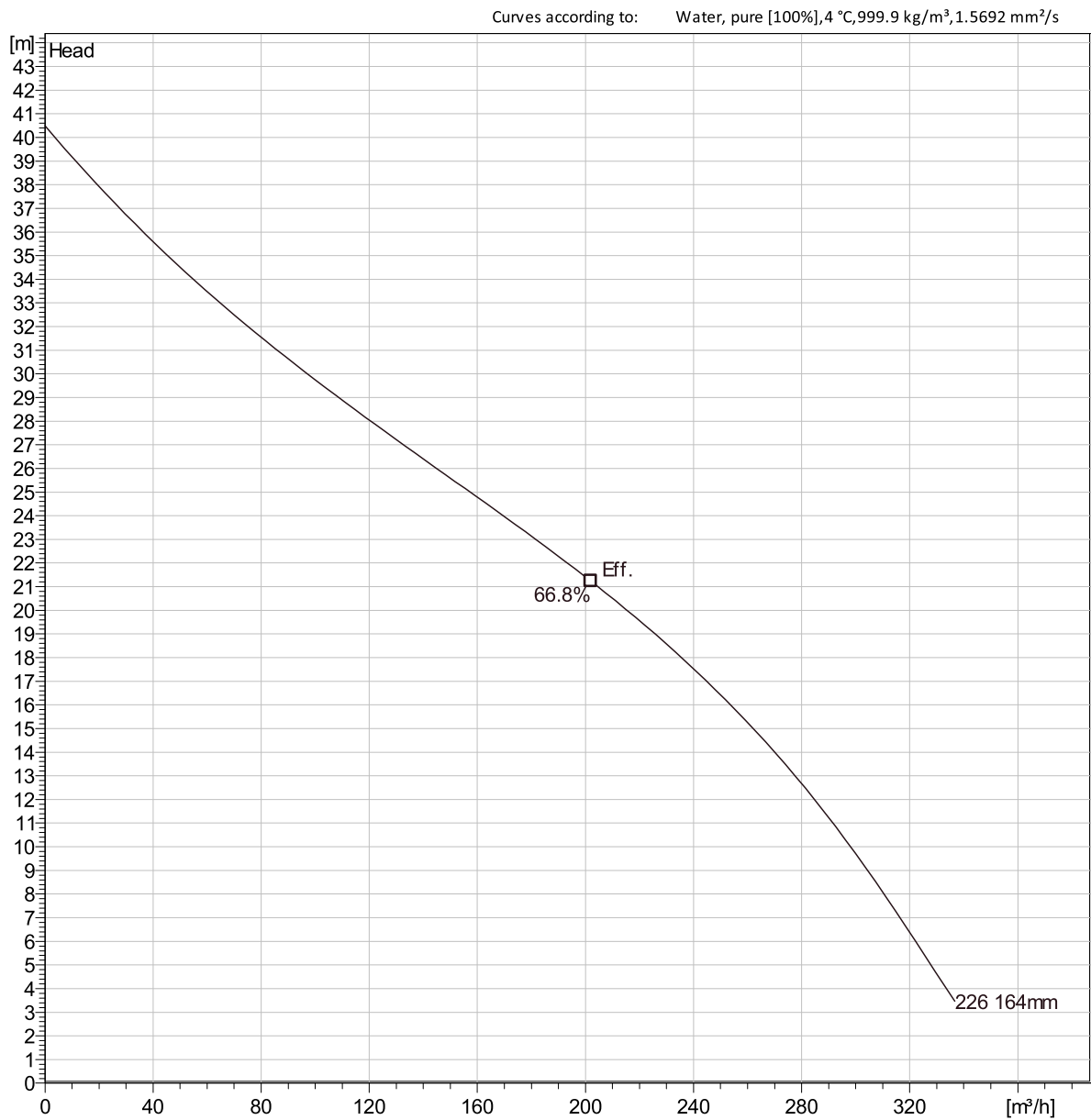
Flow

Head



8106.181 Matador N 3~

Duty Analysis



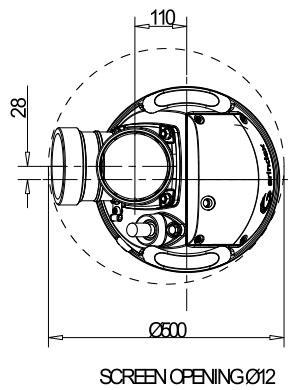
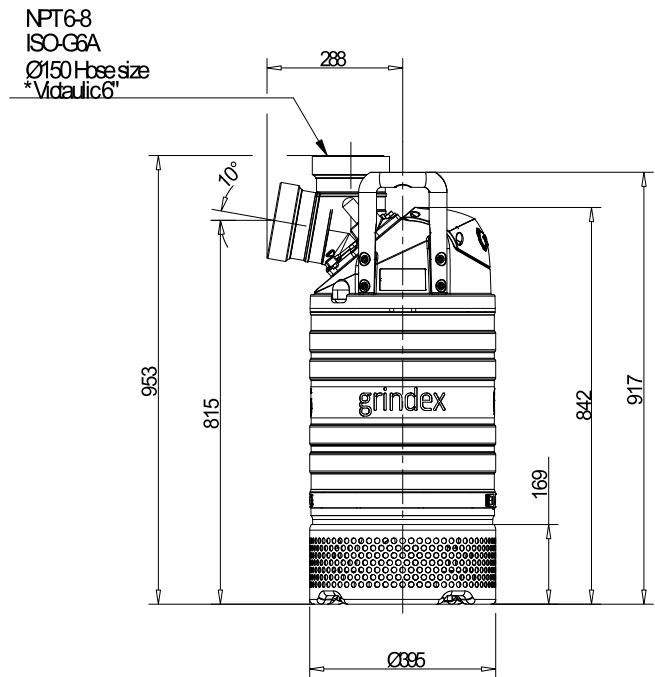
Curve: ISO 9906

Operating characteristics

Pumps/Syste ms	Flow	Head	Shaft power	Flow	Head	Shaft power	Hydr.eff.	Specific Energy	NPSHr
-------------------	------	------	-------------	------	------	-------------	-----------	--------------------	-------


8106.181 Matador N 3~

Dimensional drawing



i-9,12,t12,* Designed for "Vidautic Coupling",
according to ANSI/AWWA C606-97

Weight (kg)	
Total	131

	BS	8106	181		Discharge outlet ISO G6A Pump outlet DN 150	Scale 1:10	Date 200806	
	Matador N				Pump inlet	Drawing number	Revision	
					Suction inlet	8491400	0	